

## VERSION 4.2 DUAL MONITOR SETUP

Install for a single-computer, two-computer, or single-computer/dual-monitor system. A system preference allows you to change this option as needed (other setup considerations may apply).

NOTE: For this release, only the EEGer Game Set (EGS) and SpaceRace games are available for single-computer and single-computer/dual-monitor use.

### WINDOWS DISPLAY SETTINGS FOR DUAL MONITOR USE

1. On the Windows Desktop, use the **right** mouse button to click a blank area on the display. With the left mouse button, select **Properties** or, in Vista, **Personalize**, then **Display Settings**. The Display Settings window is displayed.
2. For monitor 1 (see Figure 1.), set the resolution to **1024x768** pixels and click **Apply**.
3. Click the icon for monitor 2 (see Figure 2.) Click to check the checkbox for **Extend the Desktop onto this monitor**. Change the resolution to **1024x768** pixels for best performance. Click **OK**.

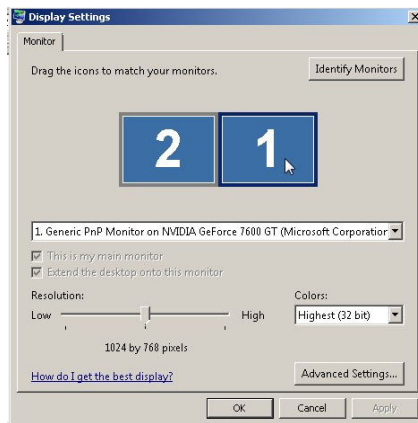


Figure 1

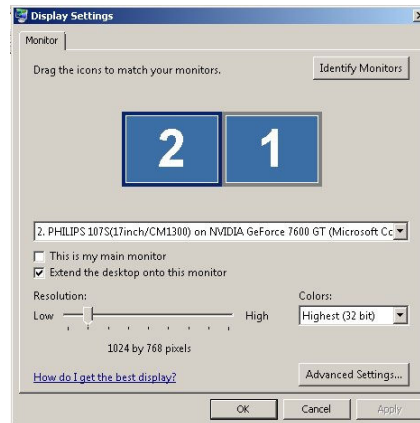


Figure 2

### EEGer SETUP INSTRUCTIONS

1. Double-click the EEGer icon on the desktop to launch EEGer.  
Note: You may see a prompt about the COM ports available. Notice the Installed ports should include what you use in setup.
2. In EEGer, select **Preferences - Configuration** and click the **Devices** tab. (See Figure 3.)

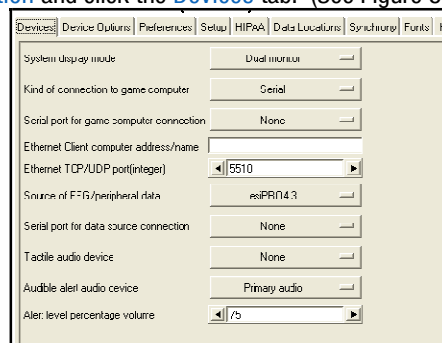


Figure 3.

3. Change **System display mode** to **Dual monitor**.
4. Set **Serial port for game computer connection** to **None** (unless you will sometimes use a second computer for games).
5. Click **Store Settings** and close the window. The program needs to close due to the mode change.
6. Double-click the EEGer icon to launch the program again.
7. From the **Tools** menu, select **Game Initialization Tool** and click **Done – save configuration**.
8. Click **SAVE all games** on the next screen that appears.