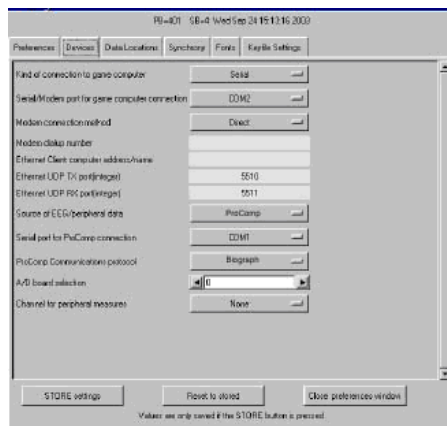


## PROCOMP SETUP Biograph Setting

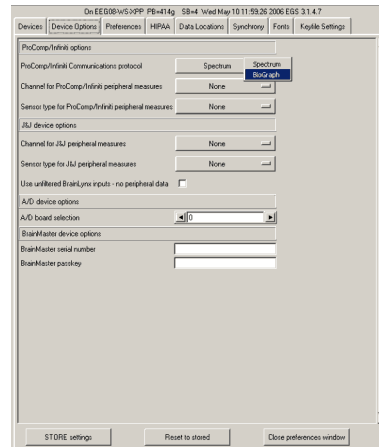
If you are using a ProComp amplifier with both EEGer and Biograph software, you can set up EEGer to utilize the Biograph setting and avoid having to change the DIP switches each time you change applications.

1. Set the DIP switch settings on the amplifier to the BIOGRAPH setting. For the Pro-SB interface, set switch 2 ON and switches 1, 3, & 4 OFF as displayed in the diagrams below. Note: SPECTRUM setting is switch 1 ON and switches 2, 3, & 4 OFF
2. In EEGer, select Preferences – Configuration and click the Devices tab.
3. For Source of EEG/peripheral data, click the box and select ProComp.
4. For ProComp Communications Protocol, click the box and select Biograph.
  - a. EEGer 4.0.x - the choice is on the same display
  - b. EEGer 4.1.x – Click the Device Options tab to change the setting.
5. Click the STORE Settings button then close the window.

Note: For the ProComp2 model, using Biograph setting in some versions may cause the battery voltage displayed in the lower right corner of the EEG screen to appear as if you are using 4-AA batteries instead of one (from 6 volt max instead of 1.5 volts). The proportional change is the same, so the text will still turn yellow then red as the charge dissipates.



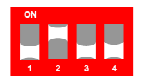
EEGer Version 4.0.x



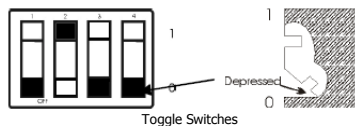
EEGer Version 4.1.x

### BIOGRAPH PROTOCOL MODE DIP SWITCH SETTINGS

ProCOMP INFINITI  
PROCOMP+BIOGRAPH



Slider Switches



Toggle Switches

ProComp2

